



(808) 372-4339

[www.greencitrusclean.com](http://www.greencitrusclean.com)

+Biodegradable +Non Toxic +Non Corrosive  
+Environmentally Safe +No Silicone +Non Flammable  
+Not tested on Animals and is a pet friendly product

**Due to its neutral ph and no petroleum or silicone, Green CITRUS CLEAN has no boundaries.**

**It can be used in any business or home as a replacement for all other cleaners.**

### **WHY BUY CONCENTRATE?**

Use 1 product, 1 spray bottle instead of 10Us!

Saves you space, time, money while helping save the environment  
by not wasting too many plastic bottles!



**Green CITRUS CLEAN is  
Not your Ordinary Cleaner**

**The product that makes you want to clean!**

Green CITRUS CLEAN is a d-limonene based product, which gets into the pores of a material to lift and remove anything which is not permanently bonded. In some cases, several applications of a 10:1 dilution may break down and remove permanent types of stains.

For a streak free Mirror, Plexiglass, Stainless Steel, Windshield & Windows, use only 1 tspn. to a quart of water!

Use a clean dry cloth or microfiber to buff dry for best results

For General Cleaning: Mix 1 part of concentrate to 10-30 parts of water {depending on the soil level}

For Heavy duty mix: to clean old stains and grease on car engine or oven, use 1 part of concentrate to 4-7 parts of water

Some stains may require soaking {soaking time varies depending on the stain}

Use the same cleaning tools as if you were using your regular cleaner

To help loosen up water stains, in the sink, tubs and windows/mirrors/windshield, use a non abrasive pad called #0000 (steelwool (finest))

#### Windshield Washer Tank

Add 1 capful of Concentrate to your Windshield Washer Tank for streak free clean windows.

#### Tar & Bug Removal – 10:1 Dilution

Spray & Wipe build up areas with a 10:1 dilution of concentrate using a microfiber cloth will help break down and remove these types of stains.

Rubber trims, use a 20:1 Dilution.

Spray evenly; let it sit for 30 seconds then wipe clean and dry with a microfiber cloth. This will remove all traces of grease, oil and dirt so your masking tape will adhere easily. Paint and

#### Overspray - 10:1 Dilution

Greene scouring pad to help. Then use a water hose to rinse off the engine.

Use Green Citrus Clean at 10:1 for dipping components and allow to soak in solution for 1 hour and rinse.

#### Carbon – 10:1 Dilution

Green Citrus Clean used in a 20:1 dilution can solve the problem of carbon on piston heads, epoxy glues, silicone seals and gaskets. Use for stacks by spraying directly on and rinsing off.

#### **Grease Oil and Silicone - 10:1 Dilution**

Use Green Citrus Clean to remove built up grease and oil. Always work with the grain of stainless steel for best results. Once you have removed the build-up, use a 100:1 dilution to finish, then buff with a clean, dry microfiber cloth. It also remove salt and rust.

It can be used to remove silicone from door jams, tires and interiors by spraying the area with Green Citrus Clean and wipe clean with a microfiber cloth. Citrus Clean removes paint oxidation. Spray a section and let it sit for 5 to 10 minutes. Use a clean, dry microfiber cloth to wipe and buff in a circular motion, restoring the paint to its natural luster.

It also removes overspray from brake lights, tires, glass and interiors. It can also be used to remove paint overspray from paint booth lights and other areas.

#### **Engine Cleaning - 10:1 Dilution**

For best results make sure your engine is hot from driving or idling for a few minutes. Spray and soak the entire engine and hoses with a 10:1 dilution of Green Citrus Clean. Let it sit for 15 minutes, while you clean your tires and whitewalls. If you have heavy grease build-up, then use a non-abrasiv

#### **Alloy Wheels & Tires - 10:1**

Spray your alloy wheels and/or soak all tires with the cleaner. Use a stiff brush or sponge to scrub the tires. Green Citrus Clean will remove brake dust, dead rubber, road grime and help restore your tires to their original condition.

#### **Auto Body Shops – 10:1 Dilution**

Green Citrus Clean removes paint oxidation, silicone from door jams, tires and interiors. Green Citrus Clean also removes overspray from brake lights, tires, glass and interiors. Use a 10:1 dilution of Green Citrus Clean. Spray a section and let it sit for 5 to 10 minutes. Use a clean dry cloth to wipe and buff in a circular motion, restoring the paint to its natural luster.

#### **Car Interiors – 10:1 Dilution**

A 10:1 dilution of Green Citrus Clean is great for removing almost any stains on carpet, mat or upholstery . A 20:1 solution works well for cleaning the dash, doors, vinyl, leather, seat belts and door jambs. A 50:1 solution is perfect for a carpet shampoo machine or steam cleaner. A 100:1 solution is great for all glass and mirrors as well as car washing.

#### **Vinyl Tops – 20:1 Dilution Cleaning**

A 20:1 dilution of Green Citrus Clean will clean vinyl tops using a stiff brush. Spray on and agitate then let to sit for 10 minutes then rinse with clean water.

#### **R V's – 10:1 Dilution**

Recreation vehicles can be kept in spotless condition with Green Citrus Clean. Use a 10:1 solution to remove the black streaks that run down from windows and to remove heavy build-up. Remove bugs and tar by using a 10:1 solution. Refer to the dilution guide for other applications

#### **STAINLESS STEEL**

Mix with water in a spray bottle and spray

generously. If heavily soiled let Green CITRUS CLEAN stand for about five minutes to loosen soil. Wipe clean with a dry cloth towel.

#### **TILE & GROUT**

Follow the dilution scale and mix in a bucket with warm water or spray bottle. Apply generously and wipe until clean. for best results use a clean mop and let stand for about 5 minutes.

#### **OVEN/STOVE TOPS**

Dilute using a spray bottle. Spray on the grease area, wipe until clean or for best result on old grease build up, soak the product for a few minutes then wipe using tools that you normally use when you clean.

### CARPET

Mix with water in a carpet shampoo machine or spray bottle. If using a carpet shampooer follow instructions associated with that machine. In a spray bottle: Spray entire area generously and wipe with a dry clean cloth or towel.



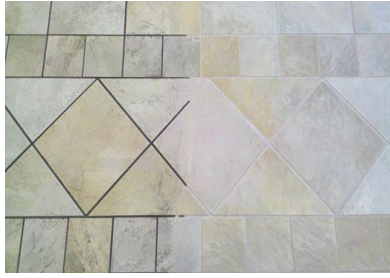
**Before and After denim stains off the leather**



**Carpet Shampoo/Stain Lifter**



## **Before and After Bath tub stains**



### **Tile Grout Restoration**

#### **WARNING:**

**May cause excessive cleaning due to its one of a kind formula!**

**Some call it the magic cleaner!**

